

# THE HAGGIN MUSEUM BULLETIN

QUARTERLY NEWSLETTER FOR MUSEUM MEMBERS

Vol. XVIII, No. 3 • Summer 2015



## INSIDE THIS ISSUE

COVER STORY: <i>Pastels USA</i> .....	page 6
1 <sup>st</sup> & 3 <sup>rd</sup> Thursdays.....	page 3
2nd Saturdays.....	page 2
Department of Museum Travel.....	page 9

# 2<sup>ND</sup> SATURDAYS for Families

On the 2<sup>nd</sup> Saturday of each month, we hold a hands-on event for families with children ages 5-12.

Activities include art projects, interactive programs and museum wide events. Reservations are not required, but seating is available on a first come, first served basis. The museum supplies all materials for the projects at these events. Contact the Education Department (209) 940-6315 or [education@hagginmuseum.org](mailto:education@hagginmuseum.org) for more information.

## PASTEL PAINTING

**Saturday, July 11  
1:30-3:00 p.m.**

Learn how to use this unique medium that combines both painting and drawing at the same time. Color lovers will have a blast learning to blend and shade!

## CARDBOARD CONTRAPTIONS

**Saturday, August 8  
1:30-3:00 p.m.**

Slits, slots, tabs and tape are all you need to build fantastic contraptions using simple recycled materials. Join us for a fun afternoon and construct a creature to take home.

## WATERCOLOR PAINTING

**Saturday, Sept. 12  
1:30-3:00 p.m.**

Join us for watercolor fun as we get ready for fall. Create an autumn leaf storm with this exciting and colorful new project.

## SPECIAL EVENT

### The Gleason Park Electric Violin Ensemble

**Saturday, August 1, 2:00 p.m.**



The Gleason Park Electric Violin Ensemble (GPEVE) is excited to return for another family friendly concert at the Haggin. In Stockton, where many young people are targets of harmful influences, GPEVE offers an inspiring alternative.

Students who live in the Gleason Park neighborhood have the opportunity to play the electric violin and be part of an ensemble that performs at public events throughout the year. Their motto is "violins not violence."

For more information contact the Education Department (209) 940-6315 or [education@hagginmuseum.org](mailto:education@hagginmuseum.org).

# JULY ART WORKSHOPS!



It's not too late to sign up for the July summer art workshops for kids at the Haggin. The Summer Art Workshop is a hands-on, gallery and studio experience for young artists ages 6-12. The classes will meet in the afternoon from 2:00-4:00, Tuesday to Friday.

Cost is \$55 per week for museum members or \$65 for non-members. There is a 10% discount for siblings registered together. Contact [education@hagginmuseum.org](mailto:education@hagginmuseum.org) or (209) 940-6315 for more information.

**July 14 - 17**

## SQUISH, SQUASH, STRETCH

Explore art in three dimensions. We'll use a variety of moldable, kid-friendly materials including plastilina, air-dry clay and fimo.

**July 21 - 24**

## PRINT IT!!

This class will investigate printmaking. Techniques include stamps, styrofoam plate printing, linoleum, and monoprints using a real roller printing press.



# 1<sup>st</sup> & 3<sup>rd</sup> Thursdays with Food & Drink

Complimentary wine, from Weibel Family Vineyards & Winery, and snacks courtesy of the Junior Women's Group will be available beginning at 6:30 p.m. every 1<sup>st</sup> & 3<sup>rd</sup> Thursday evening, when the museum is open until 9 p.m.

These special evenings vary each month to include live music, special guests and more. **Make it a date!**

## July

**OPENING RECEPTION**  
*The Pastel Society of the West Coast 29th Annual International Open Exhibition*  
*Thursday, July 2, 7:00 p.m.*

This show, a Haggin favorite, is back at the Museum for the first time since 2011. Come see nearly 100 works by some of the most elite pastel painters in the country.

**LIVE MUSIC**  
With Strings Attached  
*Thursday, July 16, 7:00 p.m.*

Chase and Carol Ann Loeb are a cello and piano duet offering a blend of classical, romantic, modern and jazz. They bring classical music to the public in a friendly and accessible way with their commitment to teaching and performing at community events and gatherings. Come and enjoy acoustic cello and piano music in an intimate and interactive atmosphere for all ages!



*Image courtesy of Randy Elliot*

## September

**COLORING BOOKS ARE FOR GROWNUPS TOO!**

*Thursday, September 3, 7:00 p.m.*

Color your stress away with a new look at the world of adult coloring books. Book pages, colored pencils and markers will be provided. Have fun with friends, and enjoy snacks and a glass of wine.



## August

**LIVE MUSIC**  
Randy Sandoli Jazz Quartet  
*Thursday, August 6, 7:00 p.m.*

Jazz pianist and composer Randy Sandoli graduated from Pacific's Conservatory of Music in 2010 and has since been teaching at the Zion Academy of Music and performing in cities from Seattle to San Diego. Randy is currently sharing original music from his 2015 debut album release, *Gettin' Goin'*.

**LIVE MUSIC**  
Folk & Acoustic Guitar  
with Tamara Phelan  
*Thursday, August 20, 7:00 p.m.*



Blending lovely three part harmonies, poetic yet down to earth lyrics, and great acoustic instrumentation, Tamara Phelan's music is an artful distillation of life in America. With Tamara on tenor guitar, Steve McLane on six-string guitar, and Ken Rabirossoff on bass, this trio makes outstanding music.

**LIVE MUSIC**  
Ms. Lizzie & Her Cadillac Kings  
*Thursday, September 17, 7:00 p.m.*



Ms. Lizzie & Her Cadillac Kings have quickly become a favorite on the Central Valley music scene. With their selection of pop hits, jumping blues and red hot rockabilly, this group of musicians is always a crowd-pleaser.

## Blue Star Museums Program Provides Free Admission for Military Families

Between Memorial Day and Labor Day 2015, The Haggin Museum offers free admission to the nation's service members, including National Guard and Reserve and their families, as part of Blue Star Museums, a collaboration among the National Endowment for the Arts, Blue Star Families, the Department of Defense and more than 2,000 museums across the United States. "Together with Blue Star Families and more than 2,000 museums, we are proud to help connect military families with the cultural resources in their communities," said NEA Acting Chairman Joan Shigekawa.

"Blue Star Museums has grown into a nationally recognized program that service members and their families look forward to each year," said Blue Star Families CEO Kathy Roth-Douquet. "It helps bring our local military and civilian communities together, and offers families fun and enriching activities in their home towns. We are thrilled with the continued growth of the program and the unparalleled opportunities it offers."

Blue Star Families is a national, nonprofit network of military families from all ranks and services dedicated to supporting, connecting and empowering military families.

## The Haggin Website is New and Improved



The Museum launched a new version of the Haggin website in May, 2015. The new site was designed by Modesto based Marcia Hermann Design in collaboration with the Museum's marketing, development and publicity teams.

In addition to a fresh, clean look, the new website contains innovative collections and events databases that allow for easier user navigation. The new, state of the art, website will provide users with more opportunities to engage with Haggin special exhibits and the core collection. In addition, the new site utilizes newer technologies that bring a level of simplicity to content management and user interface. Staying up to date with Haggin events and activities is now easier than ever.

To check out the new website visit [hagginmuseum.org](http://hagginmuseum.org). For questions or comments contact [webmaster@hagginmuseum.org](mailto:webmaster@hagginmuseum.org).

# HAGGIN

à la Carte



## 27th Annual Wine, Beer & Food Tasting Fundraiser to Serve as Opening Reception

**Saturday, October 3, 6:00-9:00 p.m.**  
**\$35 members; \$45 non-members**

The Museum's 27th annual wine, beer and food tasting fundraiser, Haggin à la Carte, will serve as the opening reception for the special exhibitions *Picasso, Miró & Hawaii Five-0: Prints from the Jack Lord Collection* and *Framed: Step into Art*. This year's fundraiser, held on Saturday, October 3, will again feature signature dishes, desserts and drinks from some of the area's best restaurants, caterers, wineries and breweries.

Participating businesses from recent years have included The Dancing Fox Winery, Mezzo, Midtown Creperie, Wine & Roses, Ruhstaller Beer, Sorelle Winery, Tequila Manaña and Weibel Family Vineyards & Winery.

Museum members will receive invitations in the mail, but everyone is encouraged to attend this festive event. Tickets can be purchased at the front desk or on the Museum's website in September. Prices are \$35 for Museum members or \$45 for non-members. For more information, call (209) 940-6316 or email [kanema@hagginmuseum.org](mailto:kanema@hagginmuseum.org).





### Junior Women's Group Passes the Gavel



From left: Lynda Winter, Karen Migliori, Joanne Waters, Susie Perry

Outgoing JWG Co-Presidents Lynda Winter and Karen Migliori have handed the gavel over to incoming Co-Presidents Joanne Waters and Susie Perry.

The Junior Women's Group hosts *1st & 3rd Thursdays*, the McKee Student Art Exhibit Reception, *Haggin in Bloom* and decorates the Museum for Christmas every year. In addition, this year the ladies of JWG will host a Santa Sunday in December. Please watch future bulletins for important JWG events and information.

### Board of Trustees Approves Gallery Renovation Project

At their May meeting, the Museum's Board of Trustees demonstrated their conscientious stewardship of our collections and their commitment to the improvement of our visitors' experience by approving plans for the most ambitious renovation project in the Haggin's 84 year history. Encompassing six of the Museum's galleries, the project includes a number of improvements and enhancements that will reintroduce the Museum's core art collections to our community:

- A refreshment of the foyer and a centrally located reception desk will help create a more welcoming atmosphere for our visitors.
- New LED lighting systems that are more efficient and cost effective will allow our visitors to literally see the works "in a new light."
- New architectural finishes including flooring, wall treatments and paint schemes will help create a complementary aesthetic for the works on display.
- Most importantly, an expanded level of interpretation that combines labels, graphics and other interpretive modes will allow us to share more information about our collections with our visitors.

To help develop and coordinate the various aspects of this project, the Board has engaged the services of Gallagher & Associates, one of world's leading museum design firms (see "Meet Patrick Gallagher").

Plans call for gallery work to begin this autumn. The project should be completed within 12-14 months. These changes will allow us to engage our visitors in a manner befitting the Haggin Museum's world-caliber collection.

Watch for construction updates on our website!

### Meet Patrick Gallagher

Patrick Gallagher is President and founder of Gallagher & Associates, the internationally recognized museum planning and design firm with offices in Washington, D.C., San Francisco and Singapore.



Gallagher's extensive experience spans over 30 years and includes projects ranging from cultural history and natural science to music and the arts. Patrick Gallagher is recognized as one of the leading global designers in the field of museum and exhibit planning and design. Gallagher & Associates has been recognized repeatedly over the years for its creativity, collaborative working style and commitment to excellence.

They have completed projects that range from interpretive master planning, museum and exhibit planning to signage and graphics in locations all over the world including Puerto Rico, Montreal, France, Tel Aviv, Italy, India, Hong Kong and Singapore. A few of Gallagher's domestic projects include exhibit design at The Grammy Museum in Los Angeles, The Smithsonian Institution's William H. Gross Stamp Gallery, The National World War II Museum in New Orleans, The Ronald Reagan Presidential Library and Museum in Simi Valley and the Natural History Museum of Los Angeles County.

## SPECIAL EXHIBITION

# Pastels usa

THE PASTEL SOCIETY  
OF THE WEST COAST

29TH ANNUAL INTERNATIONAL OPEN EXHIBITION

**On display July, 2 - September 13, 2015**

Previously held in such venues as the Triton Museum in Santa Clara, Art Center Morro Bay and the Art Museum of Los Gatos, this year the Pastel Society of the West Coast brings its 29th Annual International Open Exhibition back to The Haggin Museum beginning Thursday, July 2 through Sunday, September 13.

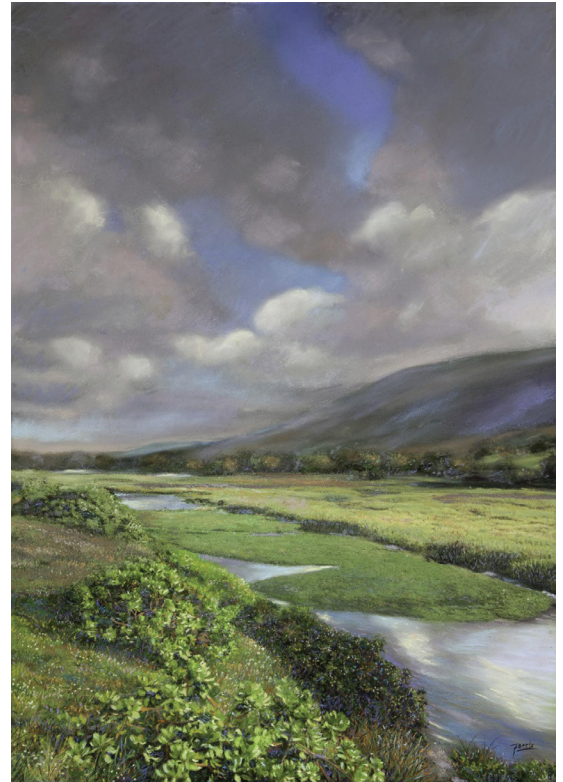
The Pastel Society of the West Coast was founded by a handful of dedicated artists from Northern California. Some of the most elite pastel painters in the country enter the annual exhibition.

Since only about 100 paintings are placed in the show, acceptance is considered a worthy accomplishment. This year's exhibition attracted 564 entries from 170 artists. Artists are allowed five entries, two of which may be selected for the show.

Three nationally prominent

artists were chosen as this year's Jury of Selection, which reviews all submitted images. Vianna Szabo, Mike Beeman and Alain Picard are all signature members of the Pastel Society of America. These highly skilled portrait and landscape painters have received high honors and awards at some of the nation's most prestigious juried art competitions. They share their skills by teaching workshops and classes at exhibitions and events throughout the country.

The Juror of Awards reviews the actual paintings at the museum and selects the award winners. This year's Juror of Awards is pastelist Terri Ford. Ford has won awards at various juried exhibitions including



Paul Fortis, *Kailua Afternoon*, 30 x 20

the Canson Excellence in Arts Award for her landscape titled *Pacific Gold* in the *Pastel Society of the West Coast's 28th Annual International Open Exhibition*, in 2014. Ford will offer a workshop at The Haggin Museum on July 25th (see "Special Event," page 7).



ON THE COVER: Jane Radstrom, *Lady in Blue*, 30 x 22

ABOVE: Diane Hokanson, *Pacific Blue Snipe II*, 12x24, PSWC



## SPECIAL EXHIBITION

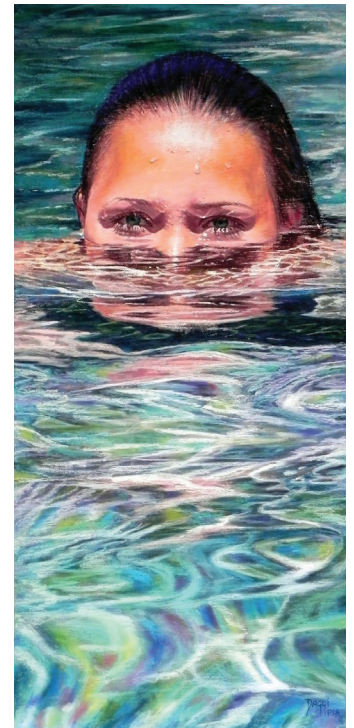
### AWARDS RECEPTION

**Saturday, August 15,  
1:30 to 3:30 p.m.**

All are invited to attend the reception and awards presentation on Saturday, August 15, from 1:30-3:30 p.m. Light refreshments will be served and the awards will be passed out. A "Best of Show" award, worth \$1,500, and about 30 Awards of Merit will be presented. The total value of all of the awards is approximately \$11,000.



Debbie Patrick, *Jorge*, 22x16, PSWC



Daggi Wallace, *Emergence*, 28 x 13, PSA

### SPECIAL EVENT Pastel Workshop with Juror of Awards Terri Ford

**Saturday, July 25, 2015; 9:30 am to 4:30 p.m.  
\$110, includes a box lunch**



Terri Ford, *Pacific Gold*, 2014  
Canson Excellence in Arts Award, PSWC

Terri Ford, Juror of Awards, will lead adults in this pastel painting workshop. Ford has been working with pastels since 1987, both in her studio and en plein air. She is most well known for her landscape paintings, which often merge open nature with architectural elements. She travels frequently to paint and teach throughout the U.S. and abroad. Ford has won numerous awards at juried exhibitions and her work appears in various publications. Contact the education department to enroll at (209) 940-6315 or [education@hagginmuseum.org](mailto:education@hagginmuseum.org). Space is limited.

### WHAT IS PASTEL?

Pastel does not refer to pale colors, as the word is commonly used in cosmetics and fashion terminology. The name comes from the French word "pastiche" because the pure, powdered pigment is ground into a paste, with a small amount of gum binder, and then rolled into sticks. The infinite variety of colors in the pastel palette range from soft and subtle to bold and brilliant.

The medium is favored by many artists because it allows a spontaneous approach. There is no drying time, and no allowances to be made for a change in color due to drying.

Many associate pastel with colored chalk, but chalk is a cheap, impermanent substance. Pastel is the most permanent of all media when applied to a permanent ground and properly framed. There is no oil to cause darkening or cracking, nor other substance or medium to cause fading or blistering. Pastels from the 16th century exist today, as fresh and lively as the day they were painted!

## Docent Council News



From left: Belen Arana, Elizabeth Edwards, Gail Weiss

The Docent Council is proud to present its latest graduating class of art trainees. Belen Arana, Renata Bricka, Lisa Doe, Elizabeth Edwards, Diana Frey, Martha Hanyak, Kelly Howard, Mikki Kindelberger, Donna McCormick, Rita Seeman, Bill Sperry, Gail Weiss and Cheryl White completed a 19 week art training course and graduated to become full members of The Haggin Museum Docent Council at the June luncheon and graduation ceremony. The Education Department congratulates them all for their dedicated work. Stop by and talk to any of our wonderful docents for a closer look at the Haggin.

## First Fridays with OLLI & SICL will break for summer

First Fridays with OLLI & SICL will pause for July and August, but resume with a presentation on September 4th, in the Malloy Classroom from 2:00 to 4:00 p.m.

## Stockton Symphony Preview

Sunday, September 13, 3:00-4:00 p.m.

Fantasy, passion, and electricity ignite this year's season of performances. Join Stockton Symphony music director Peter Jaffe as he introduces the Stockton Symphony's 2015-2016 season at this annual Museum event since 1995.

Maestro Peter Jaffe explores the origins of orchestral masterpieces with musical sketches and insights into this season's selections. The season includes an all-Beethoven program, Copland's *Rodeo*, Dukas'



Maestro Peter Jaffe

*The Sorcerer's Apprentice*, Mozart's *Eine kleine Nachtmusik* as well as Grieg, Tchaikovsky, Respighi, and Mendelssohn's confection *A Midsummer Night's Dream*. A post-talk question and answer session is always an engaging portion of this Haggin tradition.

For more information contact the Education Department at (209) 940-6315 or [education@hagginmuseum.org](mailto:education@hagginmuseum.org).

## Washoe Basket on Loan to the Nevada Museum of Art



High shouldered, round bowl by Sarah Jim Mayo of the Washoe Tribe, Carson Valley, Nevada. C. 1910-1915

A basket from the Haggin's American Indian collection, by the renowned Sarah Jim Mayo of the Washoe tribe, will be on loan to the Nevada Museum of Art in Reno until January 2016. Mayo's basket, made between 1910 and 1915, is part of a legacy of works by remarkable female Washoe weavers. The body of these works represent the shift from a functional aesthetic to an aesthetic based on a burgeoning tourist economy, and a contemporary interest in traditional arts after 1885. This basket, and other Washoe objects, became of interest to collectors who were aligned with the arts and crafts movements of the early 20th century. Sarah Jim Mayo exerted significant influence during this period by introducing representational imagery to basket making. The basket, at left, contains images of a bird, a butterfly, an arrow and a tree.

At the Nevada Museum of Art, the basket will be a part of the exhibit *TAHOE: A Visual History*. The exhibit, opening on August 22nd, is the first major art historical survey exhibition of painting, Native baskets, photography, architecture, and contemporary art dedicated to Lake Tahoe, Donner Pass, and the surrounding Sierra Nevada region. *TAHOE: A Visual History* consists of 175 pieces and includes the largest collection of Washoe baskets ever assembled. Visit [nevadaart.org](http://nevadaart.org) for more information.



## DEPARTMENT OF MUSEUM TRAVEL

### HIGH STYLE

## The Brooklyn Museum Costume Collection

The Legion of Honor, San Francisco

Saturday, July 11, 2015; 8:00 a.m. to 6:00 p.m.

\$75 for Haggin Museum, SICL and OLLI members;

\$100 for non-members

*High Style* celebrates one of America's earliest and most distinguished costume collections. Tracing the evolution of fashion from 1910 to 1980, the exhibit includes 65 costumes, 35 accessories and an array of related sketches. The collection, formed in 1903, is widely recognized as one of the foremost repositories for important pieces in fashion history.

*High Style* presents the work of numerous iconic designers including, Elsa Schiaparelli, Coco Chanel and Charles James. The exhibit features the breadth of the Brooklyn Museum Costume Collection, while paying homage to fashion's response to cultural and societal transformations throughout the 20th century. For additional information, contact tour escort Pam Arana at (209) 951-2498 or pamarana@att.net. For reservations contact Merylene Marengo at (209) 940-6311 or mmarengo@hagginmuseum.org.

AT RIGHT: Arnold Scaasi, evening ensemble, 1961. Cream silk satin dress printed with red and black polka dots; coat of red silk barathea. Brooklyn Museum Costume Collection at The Metropolitan Museum of Art, Gift of the Brooklyn Museum, 2009; Gift of Kay Kerr, 1965. Image © The Metropolitan Museum of Art

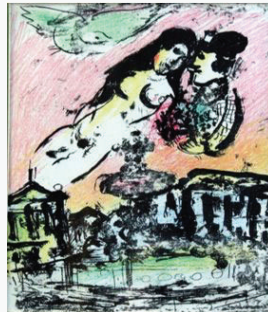


### UPCOMING SPECIAL EXHIBITIONS

#### **Picasso, Miró & Hawaii Five-0: Prints from the Jack Lord Collection**

Oct 1, 2015 - Jan 3, 2016

See rarely viewed prints by some of the biggest names in 20th century modernism. These Haggin collection works are curated by University of the Pacific professors Monika Meler and Bett Schumacher.



Marc Chagall, *The Sky from the Place de la Concorde*, Lithograph, c. 1920-29.



Children explore a Diego Rivera reproduction.

#### **FRAMED: STEP INTO ART**

Oct 1, 2015 - Jan 3, 2016

This engaging exhibit, on loan from the Minnesota Children's Museum, invites children and adults to experience art like never before. Exhibition texts are presented in English and Spanish.

### LOS ANGELES ADVENTURE

September 28 - October 3, 2015

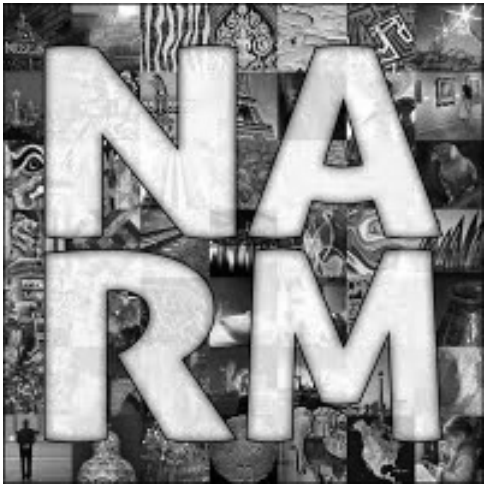
The Department of Museum Travel is planning a six-day Los Angeles adventure. The following tour options are currently under consideration:

The Huntington Library  
Norton Simon Museum  
Gamble House  
New Getty Villa  
Adamson Tile House in Malibu  
Will Rogers State Historic Park  
Hollywood Forever Cemetery  
Ronald Reagan Presidential Library  
Frank Lloyd Wright's Hollyhock House  
Frank Lloyd Wright's Ennis House  
The Sherman Library and Gardens  
Broadway Museum  
- scheduled to open this fall  
Los Angeles Philharmonic Orchestra  
-conducted by Maestro Dudamel

For additional information, contact tour escorts Joanne Moore at (209) 477-6733 or Beverly Fitch McCarthy at (209) 463-6957. For reservations contact Merylene Marengo at (209) 940-6311 or mmarengo@hagginmuseum.org.

### A NEW BENEFIT

## Supporting Membership Level and Above



The Haggin Museum is pleased to announce that we have joined the North American Reciprocal Museum (NARM) Association. NARM is one of the largest reciprocal membership programs in the world, consisting of over 700 arts, cultural and historical institutions along with botanical gardens, children's museums, and science and technology centers.

Qualified members of NARM institutions receive free admission during regular hours and member discounts at museum shops at museums across North America. You can find a list of NARM affiliated institutions by searching the NARM map at [www.narmassociation.org](http://www.narmassociation.org).

To receive NARM benefits, simply join the Haggin at the \$100 annual membership level or above. Other participating museums in our area include the Crocker Art Museum in Sacramento and the de Young Museum in San Francisco.

## Bank of America Celebrates Commitment to Museum Sponsorship



Over 150 guests of the Bank of America enjoyed a private event to view the *Photography in Mexico from the Collection of SFMOMA* exhibit. As a proud sponsor of this exhibit, Bank of America further enhanced its commitment to the arts, which is based on the belief that a thriving arts culture benefits communities, societies, and economies throughout the world.

## GIFT MEMBERSHIPS

*February 12, 2015 – May 15, 2015*

Membership Given To  
*Membership Given By*

### FAMILY

Larry & Susan Borges  
*Nicholas Matulich*

## NEW AND UPGRADED\* MEMBERSHIPS

*February 12, 2015 – May 15, 2015*

**CORNERSTONE – Patron**  
Kay Held\*

**CORNERSTONE – Benefactor**  
Tim & Lynn Grunsky\*  
Mr. & Mrs. Robert Hunefeld\*  
Ms. Nishka Yudnich\*

**CORNERSTONE – Friendship**  
Catey & Kevin Campora\*  
Larry & Joan Lee\*  
Jo Anne Lynch\*

### SUPPORTING

Kitty Chapman & AJ Hurford\*  
Hillard Corren &  
Florence Arnold  
William & Belen Koch\*  
Charles & Danielle Krietz\*  
Mr. & Mrs. Jerry Nakamura  
Walt & Moira Nichols  
Bernadine & George Piccardo\*  
Joe & Connie Rishwain\*  
Ms. Beverly A. Rushing\*  
Sydney & Mary Lois Thompson\*  
Jon & Pauline Uota\*  
Mr. & Mrs. Jerry Workman\*

### FAMILY

Morris Artiaga & Cindy Clays  
Renee Balmert  
Leslie Bartosch  
Mark & Elizabeth Berbower  
Elizabeth Y. Edwards



## MEMBERSHIP & GIFTS

Mingo & James Greco  
Joanne & Allan Lange  
Tom & Margaret Leach  
Maxine Lees\*  
Kali & Anthony Matthews  
Carmen Mehringer  
Gloria Morisaki  
Dana O'Dell  
Suki & S. Thomas Tutthill  
Michael Varinsky & Tina Dolin

### INDIVIDUAL

Jim DeLoach  
Sheri Fenley  
Lavern Gondry  
Kenneth Herold  
Carol Hofheinz  
Phyllis Miller  
Mrs. Larry Pellegrini  
David Ripperda  
Doris Salley  
Sharon L. Stoner  
Joe Valdehuesa  
Kirsten Yamaguchi

### STUDENT

Jessica Campos  
Kaitlyn Lichter

Hilde & Wendell Gerken  
Matthew & Barbara Golden  
Haggin Museum Docent Council  
Barbara Kelley  
Lee Kirkland  
Marti Kulisch  
Diane & Manuel Luis  
Rick & Margaret Mallett  
Sheryl & Evan Rodda  
Billie Granados, Donald Granados &  
Stephen Ruse  
Ernie & Pam Segale  
Michael & Arlene Smith  
Angelo Stagnaro  
Norene Taddei  
Linda & Manuel Valadez  
Pat Van Oss  
Paula Waltz  
Linda & John Whittock  
Carmen Wong

### In memory of Jack Heryford Green

Mr. & Mrs. Joseph Gwerder  
Mr. & Mrs. Keith D. Hilken  
Alice G. Lenz  
Dick & Caroline McClure  
Mr. & Mrs. Robert Schene

### In memory of Edie Jones

Mr. & Mrs. Keith C. Bewley  
Paul & Terry House  
Carolyn Mallett  
Mr. & Mrs. Herbert Rogers  
Anne B. Sheldon & Fred Nishi

### In memory of Dwayne McClendon

Alice G. Lenz

### In memory of Kate Riggio

The Haggin Museum Junior  
Women's Group

### In memory of Mary Lou Scott

The Haggin Museum Junior  
Women's Group  
Alice G. Lenz  
Ms. Karen L. McKee

### In memory of Linda Shaffer

Mrs. Roz Hansen

### In memory of Marlyn Roberts Stewart

Charla Lyons King

### In memory of Robert D. Williams, M.D.

Bruce & Alyce Benninger

### In memory of Nadeen Womble

Jerry & Jane Butterfield

## SPECIAL GIFTS

*February 12, 2015 – May 15, 2015*

### Celebrating the 60th Anniversary of Dodie & Gordon Bettencourt

Alice G. Lenz

### Celebrating the 42nd Anniversary of John & Beverly McCarthy

Richard & Mary Jo Gohlke  
Anne B. Sheldon & Fred Nishi

### Celebrating the birthday of Colleen Fetters

Mr. & Mrs. Charles Wagner

### McKee Prize for Excellence in 3-D Art

Robert & Sonya S. Schumacher

## MEMORIAL GIFTS

*February 12, 2015 – May 15, 2015*

### In memory of Bonnie Boggiano

Michael & Joy Panzer

### In memory of Chonie Buettner

Marti Kulisch

### In memory of Thelma da Ganna

Doug & Marsha Haydel

### In memory of Anna Esau

Jerry & Jane Butterfield

### In memory of Jim Estrada

Nancy Alumbaugh  
Merylene Marengo Arsanis  
Mr. & Mrs. William Brierly  
Christine Burdick  
Pat & Harriet Catania  
Keith & Donna Cobb  
Edward & Sandra Cruz

## PLEASE NOTIFY US OF ANY CHANGE IN ADDRESS

Contact Membership/Marketing  
Coordinator Kristen Anema at  
(209) 940-6316 or [kanema@hagginmuseum.org](mailto:kanema@hagginmuseum.org)



San Joaquin Pioneer & Historical Society

**1201 N. Pershing Avenue  
Stockton, CA 95203**

**(209) 940-6300  
www.hagginmuseum.org**

Non-Profit Org.  
U.S. Postage  
**PAID**  
Stockton, CA  
Permit No. 382

### 2015 BOARD OF TRUSTEES

Kerry L. Krueger, Chair  
Mike Klocke, Secretary

James Hanley, Vice Chair  
Kevin Soulsby, Treasurer

Kurt Blakely  
Thomas E. Bowe III  
Angela Brusa  
Jane R. Butterfield  
Steven J. Cottrell

Kathleen A. Hart  
Bill Jeffery  
Chris McCaffrey  
Dick McClure  
Carol J. Ornelas

Gina Brown Rishwain  
Sharon K. Schenone  
David M. Silva  
Monica J. Streeter  
Ed Zuckerman

### MUSEUM STAFF

Tod Ruhstaller - Chief Executive Officer,  
Curator of History

Susan Obert - Deputy Director,  
Director of Development

Karen Richards - Chief Financial Officer

Kylee Congrave - Curator of Collections

Erin Hicks - Registrar

Lisa Cooperman - Curator of Education

Lindsey Munzel - Education Assistant

Kristen Anema - Membership/Marketing Coordinator

Meredith Lange - Publicity Coordinator

Merylene Marengo - Administrative Assistant

Lisa Falls - Museum Store Manager

Barbara Avey - Museum Store Assistant

Cheryl Taylor - Museum Store Assistant

Celia Castro - Front Desk Receptionist

Jim Burwell - Guard

Tommy Machuca - Guard

#### Museum & Store Public Hours:

Wednesdays-Fridays: 1:30-5:00 p.m.      Saturdays-Sundays: 12:00-5:00 p.m.  
1<sup>st</sup> & 3<sup>rd</sup> Thursdays: 1:30-9:00 p.m.

**Admission:** \$8 Adults  
\$7 Seniors (ages 65+)  
\$5 Students, Youth (ages 10-17)

FREE Members, 1<sup>st</sup> Saturday of the month, Children under 10 with an adult

Articles in this quarterly newsletter may be reproduced without permission from The Haggin Museum.



Victory Park  
1201 N. Pershing Avenue  
Stockton, CA 95203-1699

# THE HAGGIN MUSEUM

## CONTACT INFORMATION

(209) 940-6300  
Fax: (209) 462-1404  
www.hagginmuseum.org

<p><b>Tod Ruhstaller</b> CEO; Curator of History truhstaller@hagginmuseum.org 940-6314</p>	<p><b>Susan Obert</b> Deputy Director; Director of Development sobert@hagginmuseum.org 940-6331</p>
<p><b>Karen Richards</b> Chief Financial Officer krichards@hagginmuseum.org 940-6313</p>	<p><b>Kylee Congrave</b> Curator of Collections kdenning@hagginmuseum.org 940-6333</p>
<p><b>Lisa Cooperman</b> Curator of Education education@hagginmuseum.org 940-6315</p>	<p><b>Erin Hicks</b> Registrar ehicks@hagginmuseum.org 940-6321</p>
<p><b>Lindsey Munzel</b> Education Assistant lmunzel@hagginmuseum.org 940-6332</p>	<p><b>Kristen Anema</b> Membership/Marketing Coordinator kanema@hagginmuseum.org 940-6316</p>
<p><b>Meredith Lange</b> Publicity Coordinator mlange@hagginmuseum.org 940-6312</p>	<p><b>Merylene Marengo</b> Administrative Assistant mmarengo@hagginmuseum.org 940-6311</p>
<p><b>Lisa Falls</b> Museum Store Manager store@hagginmuseum.org 940-6319</p>	<p><b>Celia Castro</b> Front Desk Receptionist frontdesk@hagginmuseum.org 940-6317</p>

### Public Hours:

Saturdays-Sundays ..... 12:00-5:00 p.m. Wednesdays-Fridays.... 1:30-5:00 p.m. 1<sup>st</sup> & 3<sup>rd</sup> Thursdays..... 1:30-9:00 p.m.

Sunday	Monday	Tuesday	Wednesday	Thursday	Friday	Saturday
* See article in this issue ++ Advance reservations required			<b>1</b>	<b>2</b> <i>1<sup>st</sup> Thursday</i> <b>OPENING RECEPTION:</b> <i>The Pastel Society of the West Coast 29th Annual Exhibition</i> 7:00 PM*	<b>3</b> <b>FREE Admission Day</b>	<b>4</b> <b>INDEPENDENCE DAY</b> Museum Closed
<b>5</b>	<b>6</b> Museum Closed	<b>7</b> Museum Closed	<b>8</b> Docent Council Board Meeting 9:30 AM  MSA Meeting 12 NOON	<b>9</b>	<b>10</b>	<b>11</b> <b>DMT: HIGH STYLE</b> 8 AM - 6 PM*++  <b>2ND SATURDAYS PASTEL PAINTING</b> 1:30-3:00 PM*
<b>12</b>	<b>13</b> Museum Closed	<b>14</b> <i>Summer Art Workshop Session #1*++</i> DMT Meeting 10 AM Museum Closed	<b>15</b>	<b>16</b> <i>3<sup>rd</sup> Thursday</i> <b>With Strings Attached</b> 7:00 PM*	<b>17</b>	<b>18</b>
<b>19</b>	<b>20</b> Museum Closed	<b>21</b> <i>Summer Art Workshop Session #2*++</i> Museum Closed	<b>22</b> Docent Council General Meeting 9:30 AM	<b>23</b>	<b>24</b>	<b>25</b> <b>Terri Ford Pastel Workshop</b> 9:30 - 4:30*++
<b>26</b>	<b>27</b> Museum Closed	<b>28</b> Museum Closed	<b>29</b>	<b>30</b>	<b>31</b>	

# AUGUST 2015

# THE HAGGIN MUSEUM

# Events Calendar

Sunday	Monday	Tuesday	Wednesday	Thursday	Friday	Saturday
<b>Public Hours:</b> Saturdays–Sundays . . . . . 12:00–5:00 p.m. Wednesdays–Fridays . . . . . 1:30–5:00 p.m. 1 <sup>st</sup> & 3 <sup>rd</sup> Thursdays . . . . . 1:30–9:00 p.m.						<b>1</b> FREE Admission Day Gleason Park Electric Violin Ensemble 2:00 PM*
<b>2</b>	<b>3</b> Museum Closed	<b>4</b> Museum Closed	<b>5</b>	<b>6</b> <i>1<sup>st</sup> Thursday</i> Randy Sandoli Jazz Quartet 7:00 PM*	<b>7</b>	<b>8</b> <i>2<sup>ND SATURDAYS</sup></i> CARDBOARD CONTRAPTIONS 1:30-3:00 PM*
<b>9</b>	<b>10</b> Museum Closed	<b>11</b> DMT Meeting 10 AM Museum Closed	<b>12</b> Docent Council Board Meeting 9:30 AM MSA Meeting 12 NOON	<b>13</b>	<b>14</b>	<b>15</b> Pastel Society Awards Reception 1:30 - 3:30 PM*
<b>16</b>	<b>17</b> Museum Closed	<b>18</b> Board of Trustees 4 PM Museum Closed	<b>19</b>	<b>20</b> <i>3<sup>rd</sup> Thursday</i> Folk & Acoustic Guitar with Tamara Phelan 7:00 PM*	<b>21</b>	<b>22</b>
<b>23</b> 30	<b>24</b> Museum Closed 31	<b>25</b> Museum Closed	<b>26</b> Docent Council General Meeting 9:30 AM	<b>27</b>	<b>28</b>	<b>29</b>

# SEPTEMBER 2015

# THE HAGGIN MUSEUM

# Events Calendar

Sunday	Monday	Tuesday	Wednesday	Thursday	Friday	Saturday
<b>30</b>	<b>31</b> Museum Closed	<b>1</b> Museum Closed	<b>2</b>	<b>3</b> <i>1<sup>st</sup> Thursday</i> Coloring Books for Grownups 7:00 PM*	<b>4</b> First Fridays with OLLI & SICL 2:00-4:00 PM*	<b>5</b> FREE Admission Day
<b>6</b>	<b>7</b> Museum Closed	<b>8</b> DMT Meeting 10 AM Museum Closed	<b>9</b> Docent Council Board Meeting 9:30 AM MSA Meeting 12 NOON	<b>10</b>	<b>11</b>	<b>12</b> <i>2<sup>ND SATURDAYS</sup></i> WATERCOLOR PAINTING 1:30-3:00 PM*
<b>13</b> Pastel Society Exhibition Closes* Stockton Symphony Preview 3:00 PM*	<b>14</b> Museum Closed	<b>15</b> Board of Trustees 4 PM Museum Closed	<b>16</b> JWG Meeting 10 AM	<b>17</b> <i>3<sup>rd</sup> Thursday</i> Ms. Lizzie & Her Cadillac Kings 7:00 PM*	<b>18</b>	<b>19</b>
<b>20</b>	<b>21</b> Museum Closed	<b>22</b> Museum Closed	<b>23</b> Docent Council General Meeting 9:30 AM	<b>24</b>	<b>25</b>	<b>26</b>
<b>27</b>	<b>28</b> DMT: L.A. Adventure Museum Closed	<b>29</b> Museum Closed	<b>30</b>	<b>1</b> New Exhibits Open*	<b>2</b>	<b>3</b> →